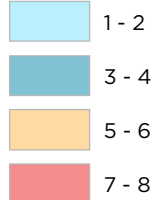


Map 6 EQUITY ANALYSIS

REDDING, CA BIKE SHARE
FEASIBILITY STUDY 2020

Total Score per Hexagon



*No hexagon indicates that the area did not overlap with Equity Score inputs

Equity Score Inputs

Cal Enviro Screen 3.0 Score:
61% or higher

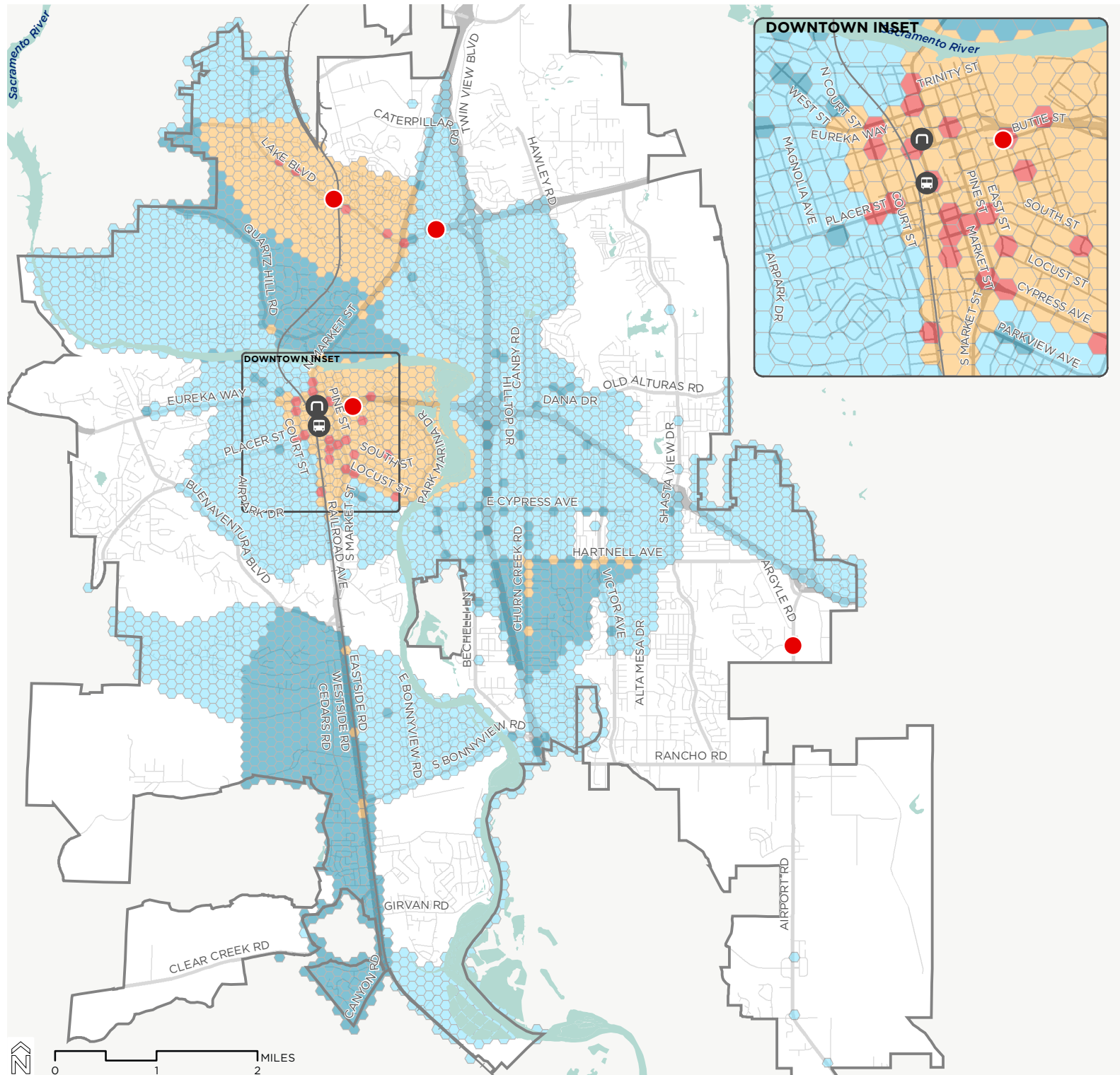
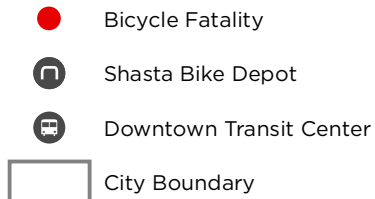
No Vehicle Ownership:
16% or greater of households
without a vehicle

Median Household Income:
Block group median income falls
below less than 80% of statewide
median

Opportunity Zones:
Census tract has been flagged as
opportunity zone

Bicycle Collisions:
Bicycle-related fatality or collision
has occurred in last 5 years

Destinations + Boundaries



Source: City of Redding Open Data Portal, ACS 2018, CalEnviroScreen, UC Berkeley TIMS, US Census, CA Opportunity Zones..

V. Equity Analysis

In addition to demand, equity is an essential component in determining the most optimal bike share system and service area. An equitable bike share system is accessible to underserved communities and is geographically distributed throughout neighborhoods and demographic groups. For Redding's bike share study, the following inputs were used to determine equity scores:

- CalEnviroScreen (census tracts with score of 61% or higher) - 2 points
 - CalEnviroScreen uses environmental, health, and socioeconomic information to identify California communities that are most vulnerable to and disproportionately burdened by the effects of pollution.
- Households with no vehicles (census tracts with 16% or more zero-vehicle households) - 2 points
 - Zero vehicle households are more likely to be reliant on transit, bicycling, walking or ride-hailing services for access to jobs and amenities.
- Low income communities (block groups) - 2 points
 - Low income communities within the State of California are defined by those earning below 80 percent of the statewide median income. Per the 2013-2017 ACS 5-year estimates, the California statewide median income is \$67,169. Census block groups where the median income falls below 80 percent of the statewide median, or \$53,735, were included in the equity analysis.
- Opportunity Zones (census tracts) - 2 points
 - Designated opportunity zones showcase areas where new investments in environmental justice, sustainability, climate change and affordable housing are supported.
- Bicycle-related Collisions - 2 points
 - Areas where a fatality occurred (2 points)
 - Areas where a collision resulting in severe/minor injury occurred (1 point)

Map 6 shows the results of the equity analysis. Areas shaded with red and orange indicate places in Redding that scored five or more points out of a total possible score of 10. These places met three or more of the input criteria. Areas shaded with dark blue and light blue indicate places that scored 1-4 points of the total possible 10. These areas met one or two of the input criteria. Areas with no color did not meet any of the equity input criteria.